

# Panasonic<sup>®</sup>

## Operating Instructions Refrigerator

---

Model Number

NR-BB251Q SHK

NR-BB271Q SHK

NR-BB271G SHK



**Please read this user manual before  
operating your refrigerator.**

Thank you for purchasing our product and being a Panasonic consumer. All of our products are specially designed to meet your needs.

This appliance is intended to be used in household and similar applications such as :

- Staff kitchen areas in shops, offices, and other working environments;
- Farm houses and by clients in hotels, motels, and other residential type environments;
- Bed and breakfast type environments;
- Catering and similar non-retail applications.

Panasonic Corporation  
Made in Indonesia  
印尼製造

Printed in Indonesia  
於印尼印刷  
AK-179672

**Warning**  
This sign means (It may result in severe injuries or death).

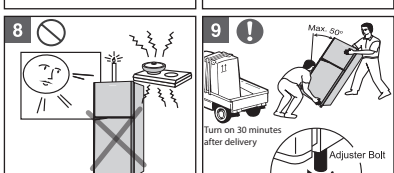
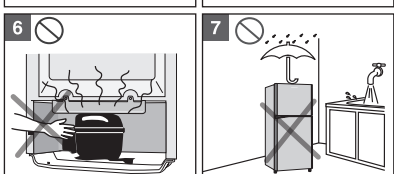
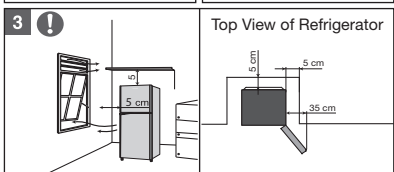
**Caution**  
This sign means (It may result in injuries or malfunction).

⊘ This sign means prohibited action.

ⓘ This sign means required action.

**Warning**  
When installing...

- ⊘ Do not install the product in locations exposed to water.
- Ⓣ If the product is placed in a wet floor, attach the grounding cable or earth leakage circuit breaker (ELCB).
- ⓘ For safety it should be checked that the ground connection system in the house has been installed correctly.



**CAUTION : RISK OF FIRE**  
Cyclopentane (C<sub>5</sub>H<sub>10</sub>) is used for insulation of this refrigerator.

**Warning**

- When the plug is disconnected, leave it for 5 minutes before plug again. If not, the compressor may not work.
- This unit operates in 220V~ 50 Hz. Use a specific electric outlet plug. When positioning the appliances, ensure the supply cord is not trapped or damaged. Do not locate multiple portable socket-outlets or portable power supplies at the rear of the appliances. If the supply cord is damaged, it must be replaced by the manufacturer, its service agent or similarly qualified persons in order to avoid a hazard.
- Make sure the refrigerator positioned in a good place. Keep ventilation openings, in the appliance enclosure or in the built-in structure, clear of obstruction. Ensure that refrigerator is provided sufficient space away from the wall, minimum 5 cm from the back, minimum 5 cm from the sides, and minimum 5 cm from the top. Ideal position on the right side should be more than 35 cm, in order to easily for taking accessories in the refrigerator when opening the door.
- Avoid children from swinging on the refrigerator door.
- For maintenance, clean the unit with a damp, soft cloth. DO NOT SPRAY unit with a spray or hose. Do not apply liquids containing benzene, kerosene or various types of concentrated chemicals. When cleaning gasket, make sure to clean gasket again with dry cloth after cleaning it with soap water because a dirty and wet gasket will easily damage resulting in insufficient cooling.

**Caution**

- Do not touch the compressor and pipes of the refrigerator by hand when the refrigerator operates (injury is likely because of high temperature).
- Avoid exposing the unit to any contact of liquid or high humidity, due to possible danger of fire and electric shock.
- Avoid exposing the unit to direct sunlight or other heat sources (E.g. : candles, stove or lamps).
- When removing the refrigerator, carefully tilt the rear of the refrigerator backwards (max. 50°) before carefully lifting it with two persons. Place it on a hard, level surface to prevent loud vibration and noise. If one of the legs does not touch the floor, adjust the "Adjuster Bolt" at the adjustable leg to stabilize it. When moving the unit put protective sheet at bottom to prevent scratching the floor.

型號	NR-BB251Q	NR-BB271Q	NR-BB271G
容量 (升)	淨容量 : 217 ℓ 總容量 : 246 ℓ	淨容量 : 236 ℓ 總容量 : 266 ℓ	
尺寸 (寬x深x高)	555 X 626 X 1546 (mm)		555 X 626 X 1636 (mm)
額定能耗	0.61 (kWh/24h)		0.64 (kWh/24h)
淨重	44 kg	46 kg	51 kg
額定冷凍量	3 kg		
門和櫃絕緣	環戊烷		
電源	220V~, 50Hz		
額定電流	1.1 A		
冷卻系統	間接冷卻 (無霜)		
溫度控制	轉動調整		
製冷劑	R600a		

**注意**


- 可移除保鮮盒及-3 ° C 微凍結室，用於存儲食物或飲料
- 設計和規格如有更改，恕不另行通知
- 如果電源線或LED指示燈損壞，請聯繫服務中心更換

## 回收此產品時


- 在取出雪櫃進行回收利用之前，請先移除所有門的密封圈，以防止將孩子鎖上。請聯繫當地相關部門處理和注意環境。
- 操作說明書應交給任何使用或將雪櫃轉移到另一地點並交付給回收廠的人員。
- 根據當地法律，環戊烷用於這種雪櫃的絕緣。當您丟棄本機時，請以適當的方法將其丟棄，不要通過燃燒處理。請聯繫當地相關部門處理和注意環境。

## 如何使用和維護

**1** 在儲存之前清潔瓶子以免滋生細菌。

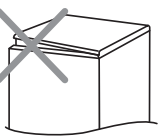


**3** 避免於雪櫃儲存仍然很熱的食物。它會增加製冷負荷。



**5** 每次確保門已正確關上。

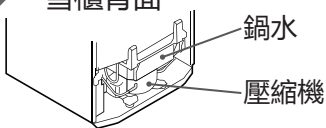
**⚠ 注意**  
發生異常/故障時，請立即停止使用產品，並斷開插頭。



**7** 雪櫃背面

鍋水  
壓縮機

**⚠ 注意**  
鍋水快滿溢時，請把水倒掉。小心向上推開，不要讓水滴出來




## 溫度控制使用




	溫度控制		溫度	
	FC	PC	FC	PC
冷	冰箱最大	(1)	-16 °C	5 °C
較冷	中央	(3)	-18 °C	3 °C
最冷	冷藏室最大	(5)	-23 °C	1 °C

注意：  
環境溫度：32 °C  
FC：冷凍室  
PC：冷藏室

**2** 清理和包裝所有的食物，以保持新鮮，並防止其他食物可能造成的污染。



**4** 正確安排雪櫃內的食物，以最大限度地利用空間，並允許適當的空氣流通。



**6** FC托盤角可根據需要移動。




**8**


**a** 將水倒至冰盤的線，然後將其放入冰盤角落。

**b** 只需扭轉冰盤，便可取出冰塊。



- 冷 (1), 保存中份量食物。
- 較冷 (3), 保存大份量食物。
- 最冷 (5), 為了加快製冰 (FC) 和使用低溫儲存食物 (PC)。

**10** 

**11** 

- This appliance is not intended for use by persons (including children) with reduced physical, sensory or mental capabilities, or lack of experience and knowledge, unless they have been given supervision or instruction concerning use of the appliance by a person responsible for their safety.
- Children should be supervised to ensure that they do not play with the appliance.

**10.** Do not use mechanical devices or other means to accelerate the defrosting process, other than those recommended by the manufacturer. Do not use electrical appliances inside the food storage compartments of the appliance, unless they are of the type recommended by the manufacturer. Do not damage the refrigerant circuit.

**11.** Do not store explosive substances such as aerosol cans with flammable propellant in this appliance.

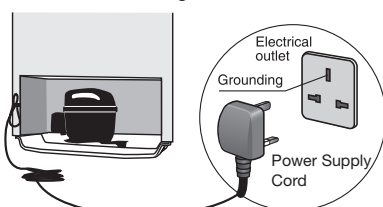
## Before operating this unit

### Grounding

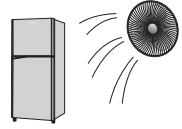
Back View of Refrigerator

**Grounding**  
Check the grounding of electricity at your home.

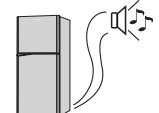
**⚠ Caution**  
You have to connect the refrigerator's ground to the grounding of electricity at your home to prevent electrical shocks.




### Symptom and checks

**1** 

• **Insufficient cooling**  
Check Dial PC, set it on middle or a colder setting. Check gasket, it is possible some parts are loose. The content of the refrigerator might be too full, or some foods might be too hot.

**2** 

• **If the refrigerator is noisy**  
Check if the floor is weak and not levelled. Check if the refrigerator is touching the wall or other objects is at rear.

**3** 

• **Compressor does not run**  
The Power Supply Cord may be loose or not properly plugged into the electrical outlet. Check if power is not being supplied to electrical outlet.



- 16. **Adjuster Bolt,**  
Adjustable right leg to help keeping the refrigerator level.
- 17. **Door Gasket,**  
To seal the gap with the door.
- 18. **Small Bottle Shelf,**  
To store small bottle, drugs, cosmetic, etc.

- 1. **Ice Tray,**  
To make ice (equipped with ice box below as place to store ice).
- 2. **Cold Air Control Dial,**  
To adjust the priority of cold air.
- 3. **FC Tray,**  
To store frozen foods.
- 4. **FC Tray Corner,**  
To store frozen foods in small size.
- 5. **Prime Fresh,**  
To store meat, fish, or dishes requiring low temperature. Prime Fresh will keep food fresh for 7 days\* by freezing the surface of food gently at temperature around -3.0 °C. So it can be cut easily without needing to be defrosted.  
\*Testing by Panasonic. The effect differs according to the conditions and type of operation.
- 6. **FC Shelf,**  
To store foods or beverages require freezing.
- 7. **Bottle Shelf,**  
To store beverages in large bottles.
- 8. **Egg Shelf & Egg Tray,**  
To store eggs (equipped with egg tray).
- 9. **Free Shelf,**  
To store small bottles, drugs, cosmetic, etc.
- 10. **Tempered Glass Tray,**  
To store foods.
- 11. **Refrigerator Temp. Control Dial,**  
To adjust the temperature of refrigerator compartment.
- 12. **Ag Clean,**  
To keep food hygiene.
- 13. **Moist Control,**  
Humidity control.
- 14. **Cover Crisper,**  
To close crisper and to store foods.
- 15. **Crisper,**  
To store fruits and vegetables and keeping them fresh.

**Instruction for Prime Fresh use**

Please kindly adjust the Cold Air Control Dial in the middle and Refrigerator Temp. Control Dial in no. 3 to optimizing Prime Fresh temperature.



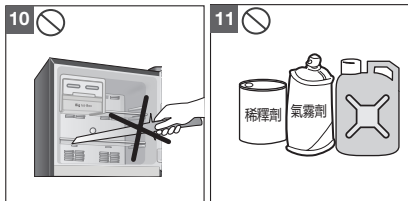
- 17. **門墊片**  
密封與門的差距。
- 18. **小瓶架,**  
儲存小瓶, 藥物, 化妝品等。

**Prime Fresh 使用說明**

請將冷氣控制器調至中間及將溫度控制器調至3, 使 -3 °C 微凍結室達到最佳保鮮溫度。

- 1. **冰盤**  
製冰 (配備冰格作為存放冰的地方)。
- 2. **冷氣控制器**  
調節冷氣優先位置。
- 3. **FC托盤**  
儲存冷凍食品。
- 4. **FC托盤角**  
儲存小型冷凍食品。
- 5. **-3 °C 微凍結室**  
用於存儲需要低溫的肉, 魚或菜餚。Prime Fresh將在-3.0 °C左右的溫度下將食物表面輕輕冷凍, 從而使食物保持新鮮7天\*。因此可以輕鬆切割, 而無需解凍。  
\*由Panasonic測試。效果因條件和操作類型而異。
- 6. **FC架**  
儲存需要冷凍的食物或飲料。
- 7. **瓶架**  
儲存大瓶飲料。
- 8. **蛋架和蛋托盤**  
儲存雞蛋 (配有蛋托盤)。
- 9. **自由貨架**  
儲存小瓶, 藥品, 化妝品等。
- 10. **鋼化玻璃托盤**  
儲存食物。
- 11. **溫度控制器**  
調節櫃內溫度。
- 12. **Ag Clean**  
保持食物衛生。
- 13. **濕度控制**  
控制濕度。
- 14. **保鮮蓋**  
保鮮和儲存食物。
- 15. **保鮮盒**  
儲存水果和蔬菜並保持新鮮。
- 16. **調節螺栓**  
可調節的雪櫃腳, 以幫助保持冰箱的水平。





- 除製造商推薦以外，不要使用機械裝置或其他方式加速除霜過程。除非設備製造商建議使用此類電器，否則請勿在其食物儲藏室內使用電器。不要損壞製冷劑迴路。
- 不要在本產品中存放易燃推進劑等爆炸物質，如氣溶膠罐。

## 操作本機前

### 接地電纜

後視圖的雪櫃

電源插座  
接地  
電源線

接地電纜  
檢查你家裡的電力接地。

**⚠ 注意**  
您必須將雪櫃的地面連接到家庭的電源接地處，以防止觸電。

### 症狀和檢查

- 冷卻不足  
檢查溫度控制，設置在中間或較冷的溫度。檢查墊片，可能有些零件鬆動。雪櫃的內容可能太滿了，有些食物可能太熱了。
- 雪櫃嘈雜  
檢查地板是否脆弱，不平整。檢查雪櫃是否碰到牆壁或其他物體在後面。
- 壓縮機不運行  
電源線可能鬆動或未正確插入電源插座。檢查電源是否未提供電源給插座。

## How to use & maintain

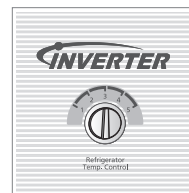
- Clean bottles before storing to avoid bacteria.
- Clean up and wrap all food to keep them fresh and to prevent possible contamination of other food.
- Avoid storing food that is still hot into refrigerator. it will enlarge the refrigeration load.
- Arrange food inside the refrigerator properly for maximum use of space and to allow proper air circulation.
- Always ensure the door is closed properly.

**⚠ Caution**  
When any abnormality / failure occurs, stop using the product immediately and disconnect the plug.
- FC Tray Corner can be moved as needed area.
- Back Side of Refrigerator

Pan Water  
Compressor

**⚠ Caution**  
Clean Pan Water when it is almost full. To release Pan Water, push upwards and pull CAUTION, do not let the water drip.
- a Pour water into the ice tray to the (full) line, and then place it in the ice tray corner.  
b Just twist the ice tray to remove ice cubes from it.

## Temperature Control Usage



	Dial Control		Temperature	
	FC	PC	FC	PC
Cold	Fridge max	(1)	-16 °C	5 °C
Colder	Center	(3)	-18 °C	3 °C
Coldest	Freezer max	(5)	-23 °C	1 °C

Note :  
Ambient Temperature : 32 °C  
FC : Freezer Compartment  
PC : Refrigerator

- COLD (1), To store food in medium amount.
- COLDER (3), To store food in large amount.
- COLDEST (5), To make ice rapidly (FC) and store foods that require very low temperature (PC).

MODEL	NR-BB251Q	NR-BB271Q	NR-BB271G
Capacity (liters)	Storage : 217 ℓ Gross : 246 ℓ	Storage : 236 ℓ Gross : 266 ℓ	
Dimension ( W x D x H )	555 X 626 X 1546 (mm)	555 X 626 X 1636 (mm)	
Rated Energy Consumption	0.61 (kWh/24h)	0.64 (kWh/24h)	
Net Weight	44 kg	46 kg	51 kg
Rated Freezing Capacity	3 kg		
Door & Cabinet Insulation	Cyclopentane		
Power Source	220V~, 50Hz		
Rated Current	1.1 A		
Cooling System	Indirect Cooling (No Frost)		
Temperature Control	Dial Adjustment		
Refrigerant	R600a		

### ⚠ Caution

- Crisper & Prime Fresh could be removed and used for storing the food or beverage
- Design and specifications are subject to change without prior notice
- If the supply cord or LED lamp is damaged, for replacement contact your nearest Panasonic service

### When recycling this product

1. Before taking the refrigerator to be recycled, please remove all the door opening seal to prevent locking a child in it. Contact your local authorities regarding the proper disposal and environmentally friendly.
2. The operating instructions should be handed over to any person who would use or handle the refrigerator would be transferred to another location and delivered to a recycling plant.
3. Regarding to local laws, cyclopentane is used for insulation of this refrigerator. When you throw away this unit, please discard it by proper method and do not dispose it by burning. Contact your local authorities regarding the proper disposal and environmentally friendly.

**⚠ 警告**  
此標誌表示  
(這可能導致嚴重受傷或死亡)。

**⚠ 注意**  
此標誌表示  
(這可能會導致受傷或故障)。

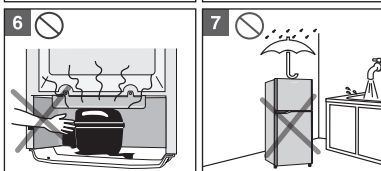
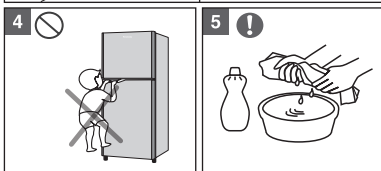
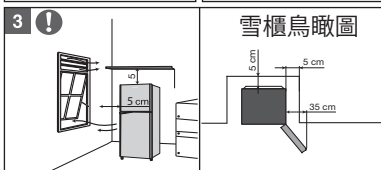
⊘ 此標誌表示禁止的動作。  
! 這個標誌意味著需要採取的行動。

**⚠ 警告**  
安裝時...

⊘ 請勿將產品安裝在暴露於水中的位置。

⚡ 如果產品放置在濕地板上，請連接接地線或漏電斷路器 (ELCB)。

! 為了安全起見，應檢查房屋內的接地系統是否安裝正確。



**注意：著火的危險**  
環戊烷 (C<sub>5</sub>H<sub>10</sub>) 用於該冰箱的保溫。

### ⚠ 警告

1. 當插頭斷開連接時，請將其放置5分鐘再插上。否則，壓縮機可能停止運作。
2. 本機額定電壓為220V~ 50 Hz。使用特定的電源插頭。放置設備時，請確保電源線沒有被夾住或者損壞。請勿在設備背部放置多用途便攜式插座或便攜式電源。如果電源線損壞，則必須由製造商，其服務代理商或具有類似資格的人員進行更換，以避免危險。
3. 確保冰箱位於一個適當地方。保持設備外殼或內置結構中的通風孔暢通無阻。確保雪櫃距離牆壁足夠的空間，距背部至少5厘米，距離側面至少5厘米，距離頂部至少5厘米。右側的理想位置應超過35厘米，以便打開門時輕鬆拿起雪櫃中的配件。
4. 避免兒童在雪櫃門上攀爬。
5. 請用潮濕的軟布清潔本機。請勿用噴霧或軟管噴塗雪櫃。不要塗含有苯，煤油或各種濃縮化學品的液體。清洗墊圈時，請用肥皂水清潔乾淨的墊片再次清潔墊圈，因為髒污和濕潤的墊圈容易損壞，導致冷卻不足。

### ⚠ 注意

6. 當冰箱操作時，請勿手動接觸雪櫃的壓縮機和管道 (△以免高溫傷害)。
7. 由於可能有火災和觸電危險，請避免將設備暴露在液體或高濕度的任何接觸處。
8. 避免將本機暴露在陽光直射或其他熱源 (蠟燭，火爐或燈泡) 下。
9. 卸下雪櫃時，請小心地將雪櫃後部向後傾斜 (最大不要超過50°)，然後兩人合力小心抬起。將其放置在堅硬的水平表面上，以防止產生較大的振動和噪音。如果其中一隻腳沒有接觸到地板，請調整可調節底部的“調節螺栓”以使其穩定。移動裝置時，將保護板放在底部，以防止刮地板。

- 除非由安全監護人就本雪櫃進行監督或指導，否則身體、感官或智力有功能障礙者，或者缺乏相關經驗和知識的人士(包括兒童)請勿使用此雪櫃。
- 應對兒童進行監督，以確保他們不會玩此雪櫃。