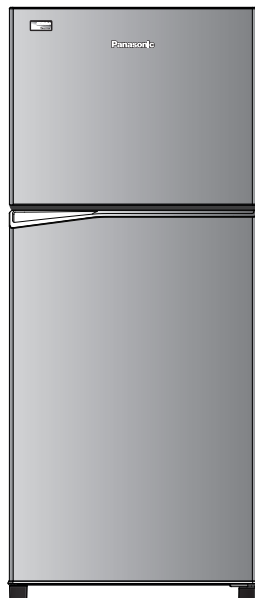




Panasonic®

Operating Instructions Refrigerator

For Household Use



Model No.: **NR-TV341B**

Contents

- Safety precautions 2
- Usage precautions 4
- Installation 6
- Parts identification 7
- Temperature control 7
- Usage tips 8
- How to make ice cubes with ice maker 9
- How to clean the refrigerator 9
- Troubleshooting 11
- Specifications 12

■ NON-CFC

This unit uses totally **NON-CFC MATERIALS** both for refrigerant (R600a) and for insulation (Cyclo-Pentane). So, this refrigerator does not damage the Earth's ozone layer.

Thank you for purchasing the Panasonic product.

- Please read these instructions carefully and follow safety precautions on page 2-5 before using this product.
- Please make sure the date and name of store of purchase are stamped in warranty card and keep it with this operating instructions.

HK

ARAH1E202770
P0921-0
Printed in Vietnam

Safety precautions

Please be sure to follow these instructions.



WARNING

This sign means: It may lead to a serious injury or death.



These signs mean prohibited action.



This sign means required action.



This sign means the appliance must be earthed to prevent electric shock.



CAUTION

This sign means: It may result in injury or property damage.



iso-butane

Risk of fire / flammable materials

Otherwise it may cause a fire, injury, electrical shock.



WARNING

When using...



- **Do not** damage the cooling circuit (piping on the back).
- **Do not** touch the compressor and pipes, because of high temperature, that there is a risk of burn injury.
- **Do not** let any children hang onto the refrigerator's door, it may overturn to the kid.
- **Do not** place any water container on the top of the refrigerator in case the spilling water causes electrical shock or combustion.
- **Do not** locate multiple portable socket-outlets or portable supplies at the rear of the appliance.
- Keep ventilation openings, in the appliance enclosure or in the built-in structure, clear of obstruction.



- This appliance is not intended for use by persons (including children) with reduced physical, sensory or mental capabilities, or lack of experience and knowledge, unless they have been given supervision or instruction concerning use of the appliance by a person responsible for their safety.
- Children should be supervised to ensure that they do not play with the appliance.

When recycling the product...



- Before taking the refrigerator to be recycled, please remove all the door opening seal to prevent locking a child in it.
- The warning labels mentioned above should be kept throughout the life of the refrigerator.
- The operating instructions should be handed over to any person who would use or handle the refrigerator whenever the refrigerator would be transferred to another location and delivered to a recycling plant.
- Regarding to local laws, Cyclo-Pentane is used for insulation of this refrigerator. When you throw away this unit, please discard it by proper method and do not dispose it by burning.

Otherwise it may
cause a fire, injury,
electrical shock.



WARNING

For power plug and cord...



- **Do not** plug or unplug with wet hands.
- **Do not** let the cord or plug be damaged.



- Disconnect power plug when cleaning.
- Plug into a wall outlet of the rated voltage on its own with the rated current and insert plug fully.
- Reserve one socket for the refrigerator only. Avoid connecting many appliances to the same socket and unroll through the length of cord.
- Remove dust periodically from the power plug.
- If the supply cord is damaged, it must be replaced by the manufacturer, its service agent or similarly qualified persons in order to avoid a hazard.
- If you detect burning smell, disconnect the power plug and ventilate the kitchen.
- **Stop** using the refrigerator and unplug the unit immediately if there is an abnormality or failure. Abnormality and failure examples:
 - Power cord or plug is abnormally hot.
 - Power cord is deeply cut or deformed.
 - There is burning smell.
 - You can feel tingling electricity.

In case of emergency...



- Maintenance work only be carried out at workshop by well-trained maintenance worker.



- **Do not** store explosive substances such as aerosol cans with a flammable propellant and chemicals or scientific specimens in the appliance.
- **Do not** use electrical appliances such as a deodorizer in the refrigerator. Leaked refrigerant may catch fire from a spark of the electrical contacts and may cause an explosion.
- **Do not** use electrical appliances inside the food storage compartments of the appliance, unless they are of the type recommended by the manufacturer.



- **Do not** disassemble, repair or modify the refrigerator by yourself. If you want to repair the refrigerator, please consult your dealer or authorized service center.
- **Do not** use mechanical device or other means to accelerate the defrosting process, other than those recommended by the manufacturer.

When installing...



- Fix the refrigerator to avoid danger due to unbalance.
- When positioning the appliance, ensure the supply cord is not trapped or damaged.



- Ensure that the refrigerator is plugged into an earthed mains socket.

Otherwise it may cause injury, accidents.

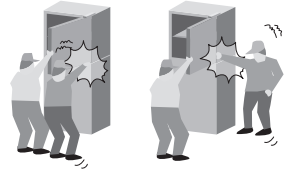


CAUTION

When opening/closing the doors...



- While opening the refrigerator, be careful not to pinch other one's hand holding the door.
- Mind the gap between the doors. They may nip your hand while closing the door.



When storing food...



- **Do not** freeze glass bottles, that there is a risk of injury. (If the liquid in a glass bottle is frozen, then the bottle may break and you may be injured.)
- **Do not** add a high impact on glass trays. (Otherwise those glass trays may break and you may be injured.)



When moving the refrigerator...



- Hold the refrigerator tightly when transporting.
- Apply protective covering, etc. to floors with a fragile surface.



Usage precautions

When opening/closing the doors...

- **Do not** refrigerate items which are bigger than tray or shelf, as the door will not close completely causing leakage of cool air.
- **Do not** open refrigerator frequently or leave it open for long time in order to prevent water dripping inside and waste energy.
- Frequently check the door opening seal, it must be closed to the refrigerator's body completely.

When cleaning...

- **Do not** clean the refrigerator with chemical substance or liquid. It will cause damage and have corrosion on the surface.
- Clean the pan water evap located over the compressor at the back of the refrigerator every three months to prevent the odour generated from humidity.



Usage precautions

When using...

- When the plug is disconnected, leave it for 5 minutes before plugging again. If not, the compressor may not work.
- Adjust the temperature according to the actual operating condition for energy saving.
- The humidity inside the fresh case may condense so wipe it with a cloth periodically. Clean the fresh case once a month.
- If you will not be at home for several days and there are nothing refrigerated in the refrigerator, the plug should be disconnected for energy saving.
- The outside wall of refrigerator cabinet may sometimes get warm, especially just after installation. This is quite normal, and is due to the built-in Mullion Dryer Pipe which prevents sweating and radiates heat.
- When humidity is high, e.g. during rainy-season, condensation may appear on the surface of cabinet, especially around the door seal gasket. Wipe off the condensed water with a clean cloth.
- **Do not** keep the door open any longer than necessary, particularly in hot, humid weather.



When storing food...

- **Do not** place warm/hot foodstuff in the refrigerator.
- **Do not** overload the refrigerator. Gap must be provided between foodstuffs to maintain the cooling effect.
- Store fruits and vegetables in vegetable case, where trapped moisture helps preserve food quality for longer time periods.
- Drinking water, beverage bottles should be sealed to prevent odor contamination.
- Foodstuff such as vegetable, fruits and fresh food should be wrapped or pack in box before freezing and refrigerating.
- Put the food such as meat or fish in the freezer if you want to store for an extended period.
- Cover juicy food with tight lids, plastic film or foil.
- Cool hot dishes in room temperature before placing them in your refrigerator.



SPECIAL FEATURE

1) ECONAVI

The microchip performing ECONAVI mode is integrated into the main control board. By detecting refrigerator's frequency of use (opening and closing of door), ECONAVI mode automatically operates to save energy.

2) INVERTER

In accordance with temperature change inside the compartment, the motor of compressor runs at different speed. When the temperature is stable, the motor runs at a lower speed (energy saving & lower noise). When powerful cooling is required, the motor runs at a higher speed.

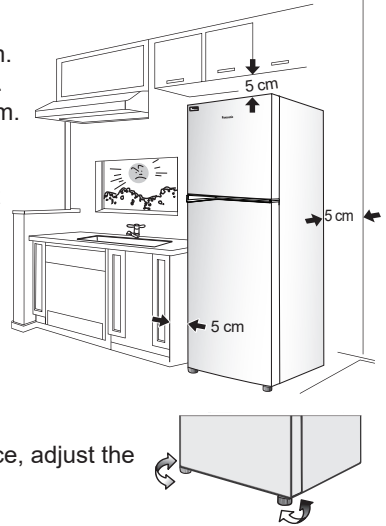
Installation

The distance requested for installation

- The top of the refrigerator and the ceiling at least 5 cm.
- The back of the refrigerator and the wall at least 5 cm.
- The sides of the refrigerator and the walls at least 5 cm.

Area around the installed unit

- **Do not** locate the refrigerator in a humid place as rust may form and may cause electric leakage.
- **Do not** locate the refrigerator exposing to direct sunlight as the heat and sunlight will increase the temperature.
- **Do not** locate the refrigerator near heat source such as cooking stove or oven.
- **Do not** block the openings around the refrigerator.
- The refrigerator must be located in the place where there is good air circulation.
- In case of placing the refrigerator on an uneven surface, adjust the adjustable bolt to make the refrigerator stands stably.



Moving or shifting

- When moving or shifting the refrigerator, remove ice cube tray, box ice tray, pan water evap etc. and check to be sure that there is no water in the refrigerator.

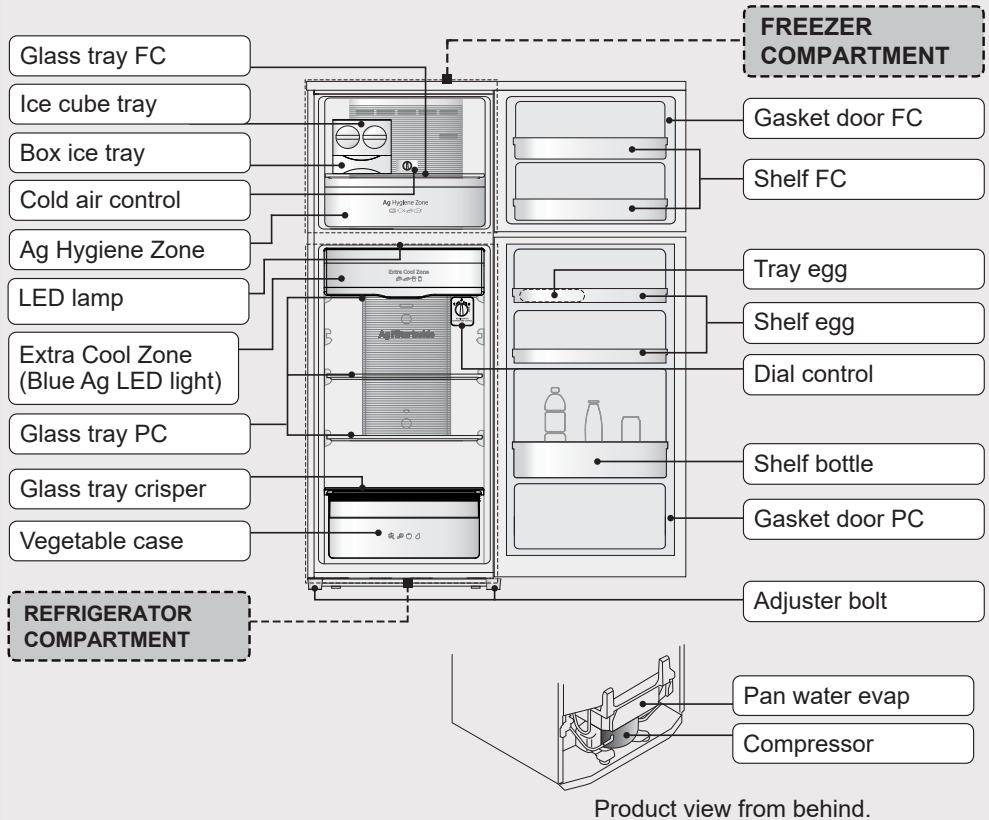
Power cord setting

- To bring power cord for use, pan water evap from left should be lifted up. Then bring the power cord out and then insert pan water evap into the block by pressing at both the sides.

LED lamp and grounding

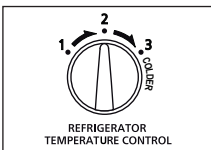
- The refrigerator LED lamp, specially designed for this refrigerator, does not function on individual replacing. If you need replacement, please contact Panasonic Service Center.
- If there is no grounding wiring plug in refrigerator, it should be connected with grounding connection to prevent electrical hazard from electric leakage.

Parts identification



Temperature control

Operate the REFRIGERATOR TEMP. CONTROL when changing the temperature of REFRIGERATOR COMPARTMENT.



TEMP. CONTROL REFRIGERATOR COMPARTMENT	
"1"	Higher than "2" by approximately 2 °C ~ 3 °C
"2"	Approximately 3 °C ~ 5 °C
"3"	Lower than "2" by approximately 2 °C ~ 3 °C

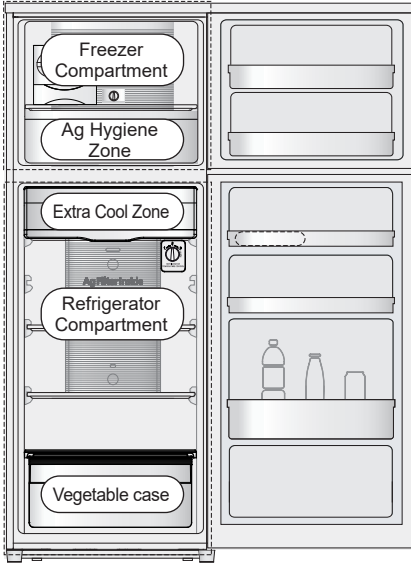
Operate the COLD AIR CONTROL when changing the cold air condition.



COLD AIR CONTROL	
"FRIDGE MAX"	REFRIGERATOR COMPARTMENT takes priority
"NORMAL"	Cold air condition is normal
"FREEZER MAX"	FREEZER COMPARTMENT takes priority

Note: Temperature of Refrigerator depends on environment, room temperature and food storage quantity.

Usage tips



Freezing

“If storing food for an extended period...”

For storage of frozen or dried foods.



Ag Hygiene Zone

“Fresh food...”

For storage of fresh foods such as meat or fish to avoid the odors spread out the freezer compartment.



Refrigeration

“Food and drinks readily served...”

For regular storage of food and drinks or temporary storage of those to be served soon.



Extra Cool Zone

“Dairy products...”

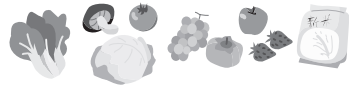
For dairy products, etc. that perish easily but whose quality changes if frozen.



Vegetable case

“Fruits and vegetables”

A rather high humidity keeps fruits and vegetables fresh and juicy.



Storage using hermetically sealed containers is recommended!

To prevent the interior from being discolored!



- Cut citrus fruits
(→ The plastic will be discolored white.)

To prevent odors from spreading!

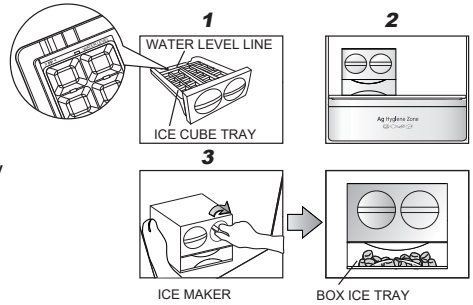


- Garlicly or other strong smelling vegetables
(→ Odors will spread to other nearby food.)

How to make ice cubes with ice maker

STEP

1. Fill water in the ice cube tray till the water level line.
2. Put ice cube tray inside Freezer room, wait until ice is made.
3. To remove ice cubes, suppress the frame with left hand and twist the dial ice cube tray clockwise with right hand. The ice cubes will drop into the box ice tray.



Remark:

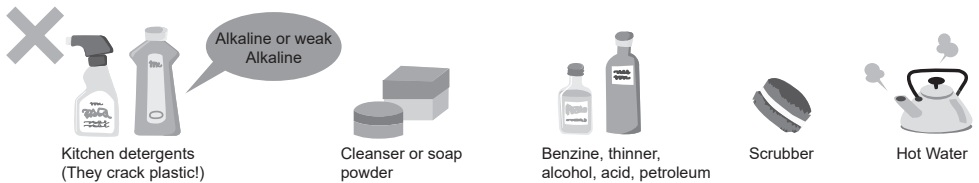
- Don't pour water into ice box for ice-making, otherwise the box may crack.

How to clean the refrigerator

- 1 Interior cleaning**
Wipe off the stain with warm water. When stains can not be removed easily, wipe them with warm water and soap by using a soft cloth.
Then wipe the soap off using damp soft cloth.
- 2 Exterior cleaning**
Cleaning by using soft cloth with warm water and soap.
Then wipe off the soap with warm soft cloth.
- 3 Gasket door FC/PC**
 - Clean by wiping gently. This area, petroleum gel was applied to reduce the friction to the refrigerator body. Be careful not to wipe off them.
 - The door opening seal is replaceable when reaching end of life. While cleaning, push it back to the groove if it comes off.



Note: Do not use the following items. (Otherwise, the surface will be scratched.)

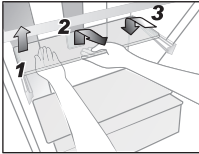


How to clean the refrigerator

Removing glass tray PC / FC, glass tray crisper for cleaning

•Removing

1. Lift the tray upward then pulling it forward until removing.
2. For tray cool zone, tilt the tray slightly upward for easier removing.



•Attaching

3. Place tray on both supporters, then push until it reaches the end.

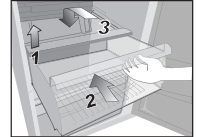
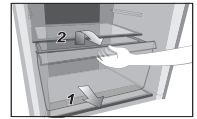
Remark:

- When removing tray above vegetable case, pull out the vegetable case first and then follow to remove the tray as above details.
- In case of attaching the tray and it does not lock, make sure that you did not attach the wrong tray.
- Make sure that you don't attach the upper side of the tray downward.

Removing vegetable case, Ag Hygiene case for cleaning

•Removing

1. Pull the case until it reaches the end of stopper.
2. Raise up the front of case a bit and then completely take out.



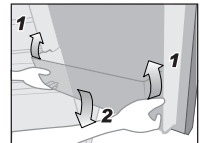
•Attaching

1. Keep the lid on the vegetable case lifting until case is attached.
2. Raise it up and place case on both supporters.
3. Push the case until it reaches the end.

Removing shelf egg, shelf bottle, shelf FC for cleaning

•Removing

1. Lift it upward, alternating between the right and left side.



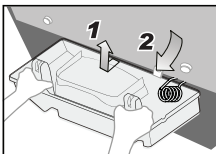
•Attaching

2. Place it on both supporters, and then press until it reaches the end of supporters.

Removing pan water evap for cleaning

•Removing

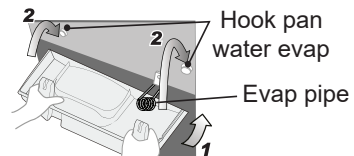
1. Tilt up the pan water evap a bit and then lift it upward until the pan water evap hole unlocks from the pan water evap hook.
2. Pull the pan water evap until it touches with the evap pipe then carefully take it out under the evap pipe.



•Attaching

1. Insert the pan water evap under the evap pipe.
2. Insert the pan water evap hole into the hook pan water evap as well as press-fitting both sides.

Remark: Check the status to make sure evap pipe does not touch the pan water evap.



Troubleshooting

Before you call for service, please check the following items:

The refrigerator does not operate.

- Check that the plug and its socket are in good condition.
- Check if there is any problem on main fuse and electrical system of the house.
- Check by unplug and wait for 5 minutes before plugging it back in.

The refrigerator does not cool enough.

- Check to be sure that the temperature control dial is at proper position.
- Check to see if the refrigerator is overloaded with stuff or there is any hot foodstuff refrigerated inside.
- Is the refrigerator exposed directly to sunlight or heat source?
- Is the refrigerator door completely closed?
- Is the refrigerator door opened frequently?

Dew, snow appear.

Outside

- When the ambient humidity is too high, the door gasket may have dew. This situation will be stopped if the air humidity decreases. Please wipe it up with dry cloth.

Inside

- Is the door closed firmly?
- Is the door being opened and closed too frequently?
- When too high weather humidity, long opening time or making too much ice, inside the freezer compartment may appear frozen snow. This is normal. Please wipe with dry and soft cloth.



The refrigerator makes noise.

- Check if the refrigerator is located on a stable floor or is installed properly.
- Check if there is any object in contact with the refrigerator.

Food becomes frozen.

- Do you put the food near cold air holes?
- Do you adjust the temperature control at "Max"? Adjust to "Min"?
- Do you put food in extra cool zone?

The inside is smelling.

- Do you store food with dry odor without wrapping it?

The surfaces of the refrigerator is hot.

- Because the refrigerator is equipped with the dew prevention and heat radiation tubes, the surfaces of the refrigerator get warmer when operating.
- The back and side plates may get warmer especially when starting up or if the door is frequently opened and closed.

Troubleshooting

The normal sounds of refrigerator.

- When the refrigerator starts operation, the sound like water flowing and boiling water is created. This is the sound of the cooling liquid.
- The noise is generated when the automatic defrost system operated.
- The dilatation of the details inside the refrigerator in the cooling process can cause sound “crack-crack”.
- You may feel that the operation sound is larger because the compressor operates in high-speed under the following conditions: the refrigerator does not cool fully on the occasion such as using it for the first time, opening/closing the door too frequently, the surrounding temperature is high. The sound becomes more quiet after cooling fully.

Lamp does not turn on.

- Please contact Panasonic service center.

Specifications

Model No.		NR-TV341B
Freezer Star Rating		✱✱✱✱
Capacity (L) (IEC 62552:2007)	Total	306
	Freezer	82
	Refrigerator	224
Outside Dimensions Width x Depth x Height (mm)		601.5 x 657 x 1645
Net Weight (kg)		52
Refrigerant Type		R600a
Rated Voltage (V) Rated Frequency (Hz)		Refer to the rating label attached inside the cabinet.

Panasonic Corporation

Website: <https://www.panasonic.com>

© Panasonic Appliances Vietnam Co., Ltd. 2021

雪櫃使用說明指引

雪櫃的正常聲音。

- 當雪櫃開始運行時，會聽見像流水或沸水的聲音。這其實是冷媒流動的聲音。
- 當自動除霜系統工作時會產生噪聲。
- 雪櫃內附件在制冷過程中膨脹會發出「劈啪」破裂聲。
- 雪壓縮機在以下情況下高速運作時，您可能會感覺運作聲音變大：雪櫃在首次使用，過於頻繁地開閉櫃門或環境溫度過高等情況下未完全冷卻。當雪櫃完全冷卻後，聲音會變得更為安靜。

燈無法打開。

- 請聯繫 Panasonic 電器服務中心。

規格

型號		NR-TV341B	
急凍等級		***	
容量 (公升) (IEC 62552:2007)	合計	306	
	急凍室	82	
	冷藏室	224	
外型尺寸 闊 × 深 × 高 (毫米)		601.5 × 657 × 1645	
淨重 (kg)		52	
雪種類型		R600a	
額定電壓 (伏特) 額定頻率 (赫茲)		請參考雪櫃門上的額定標籤。	

雪櫃使用說明指引

在要求服務前，請檢查下列事項：

雪櫃不能操作。

- 檢查並確保插頭及其插座的狀況良好。
- 檢查屋內的主保險絲和電力系統有否出問題。
- 檢查時請拔除插頭，5分鐘後再重新插回。

雪櫃溫度不夠低。

- 檢查確保控制面板上的指示燈在正確位置顯示。
- 檢查雪櫃是否負荷過多或冷藏了任何熱食。
- 雪櫃是否直接暴露在陽光下或靠近熱源？
- 雪櫃門是否完全關上？
- 雪櫃是否打開過於頻繁？

外面

- 當環境濕度過高時，門襯墊可能出現水珠。空氣濕度降低時，這種情形將消失。請用乾布將水珠擦掉。

裡面

出現水珠、結霜。

- 門是否緊密關閉？
- 開關門是否太過頻繁？
- 如果環境濕度過高，長時間打開櫃門或製作了太多冰塊，冷凍室內部就可能結霜。這是正常現象。請用乾燥的軟布抹掉。



- 檢查雪櫃是否已穩固放置或正確安裝。
- 檢查是否有任何物體與雪櫃接觸。

雪櫃發出噪聲。

- 是否把食物放近冷風口處？
- 是否將溫度控制調整為「Max」(強冷)？調整為「Min」(弱冷)。
- 是否將食物放在速凍格？

食物結冰。

- 是否放置沒有包裹而會發出氣味的食物？

內部出現異味。

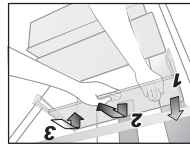
- 由於雪櫃具有防結露和發熱管設備，因此它在工作時表面會變熱。
- 當製冷啟動或櫃門經常關閉時，背部和兩側發熱會更為明顯。

雪櫃的表面發熱。

取出冷凍室、冷藏室強化玻璃層架、蔬果保鮮盒強化玻璃層架以進行清洗。

● 取出

1. 向上抬起托盤，打開背後的鎖扣，直到托盤取出。
2. 冷藏格玻璃托盤，稍微向上倒斜托盤，以方便拆卸。

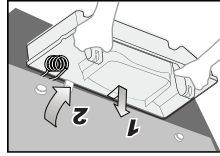


- 裝上
 3. 置於兩邊的支架上，向裡推入，直至其觸及支架底部。
- 備註：
取下蔬菜保鮮格上的托盤時，請先拉出蔬菜保鮮格，再如上所述取出托盤。
萬一在裝回盤子時卡不住，請檢查確認是否裝錯了盤子。
● 確保您未將托板的上面朝下。

拆除鍋水蒸發器以進行清洗

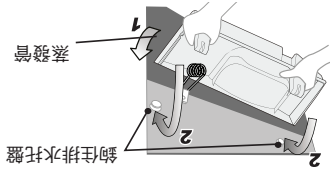
● 取出

1. 向上傾斜鍋水蒸發器一點，然後向上提起，直到鍋水蒸發孔從鍋水蒸發器鉤解。
2. 拉出鍋水蒸發器，直到它與蒸發管接觸，然後小心地將其從蒸發管下取出。



● 裝上

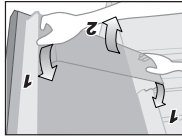
1. 將蒸發水蒸發物插入蒸發管下方。
 2. 將鍋水蒸發孔插入鉤鍋水蒸發並壓入兩側。
- 備註：
● 檢查狀態以確保蒸發管不接觸鍋水蒸發。



取出蛋架、
瓶架和冷凍室層架以進行清洗。

● 取出

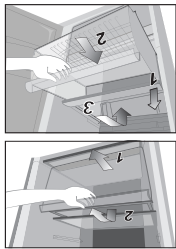
1. 層架左右交互慢慢抬起。
- 裝回
2. 水平插入並下推夾進行裝入。



拆除蔬果格，淨味除菌區以進行清洗。

● 取出

1. 將蔬果保鮮格／淨味除菌區向裡推入直至到達盡頭。
2. 稍微抬起蔬果保鮮格／淨味除菌區前蓋子，直到盒裝好。
2. 抬起它並將椅子放在兩個支架上
3. 向裡推入，直至到達盡頭。



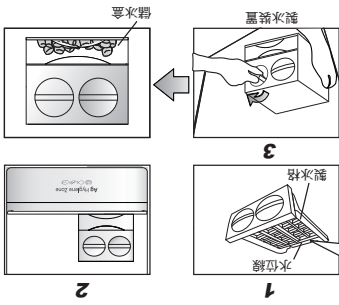
如何製造冰塊

步驟

1. 向冰塊盤加水至水位線。
2. 將冰塊盤放進急凍櫃，直到冰塊形成。
3. 如需取出冰塊，用左手壓住格框，用右手順時針轉動圓形製冰格。冰塊便會掉進冰盒。

備註：

- 切勿將水倒入儲冰盒制製，否則製冰格會裂開。



如何清洗雪櫃

1

內部清洗

- 用溫水擦去污漬。當污漬無法輕鬆擦除時，可用柔軟的布蘸溫水和肥皂進行清潔。
- 然後，用濕軟布擦掉肥皂水。

2

外部清洗

- 使用柔軟的布蘸溫水和肥皂進行清潔，然後擦去肥皂水。
- 然後，用濕軟布擦掉肥皂水。

3

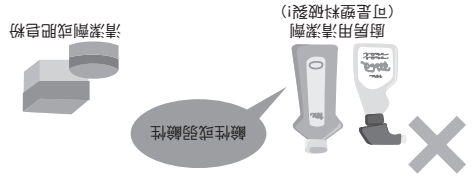
門襯墊 F/C/PC

- 輕輕擦拭乾淨。此區域塗有石油凝膠以少雪櫃櫃身的摩擦。

請格外小心，切勿擦掉。

- 櫃門密封膠須在達到使用壽命時更換。清潔時，如果密封膠從凹槽掉落，可將其按壓回槽內。

註：請勿使用以下物品（以免表面刮花）

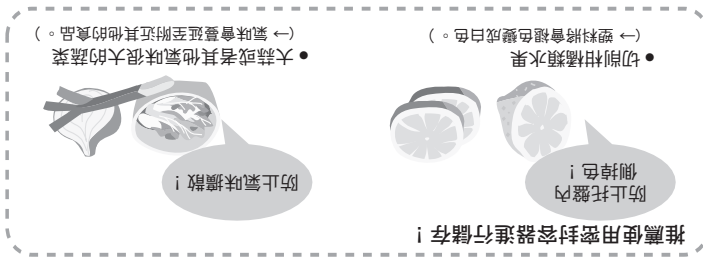


洗滌劑

熱水



請使用溫水!



「水果和蔬菜」
較高濕度便於保持水果和蔬菜保鮮多
汁。

蔬菜保鮮格



「乳製品...」
對於乳製品等，容易腐爛，但冷凍後其
質量會改變。

冷藏格



「食料與飲料隨時可用」
用於常規存儲食物和飲料或者暫時儲存即
時需要的食物和飲料。

冷藏



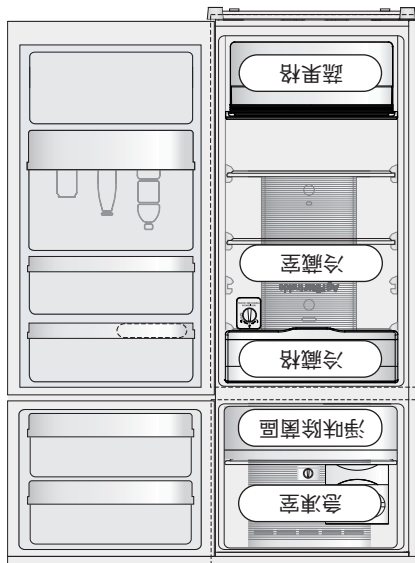
「新鮮食品...」
用於儲存新鮮食物，例如肉或魚，
以避免氣味散開冷凍室。

淨味除菌區



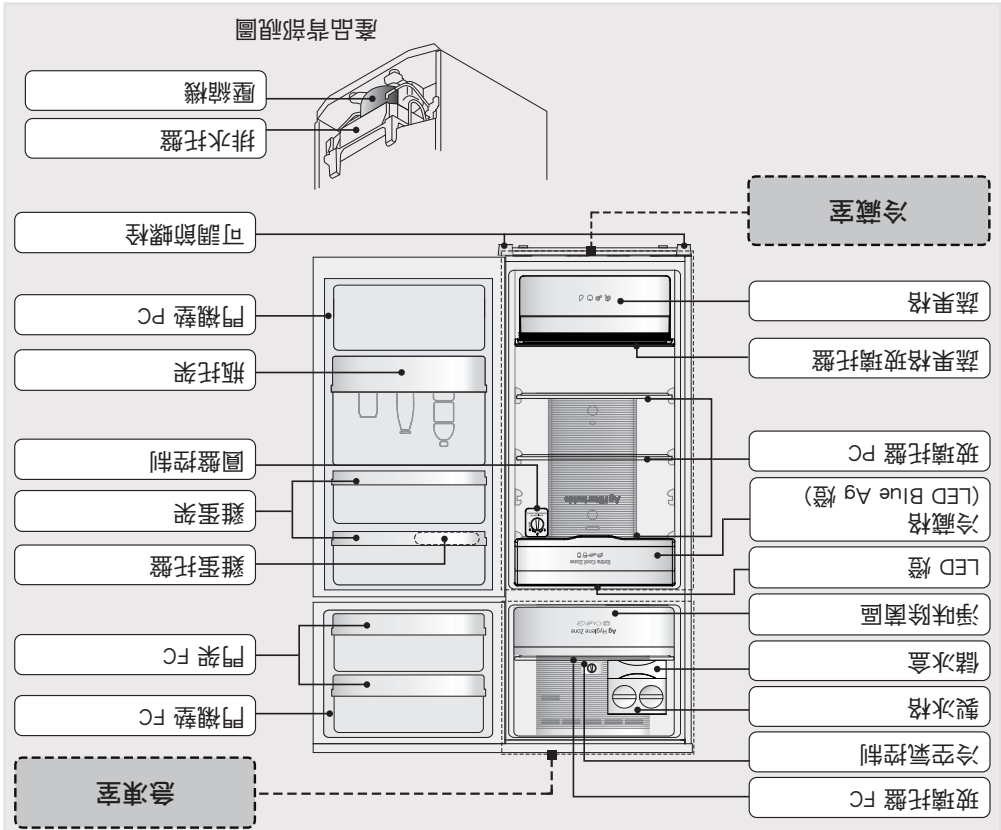
「食物需要長時間儲存...」
儲存冷凍食物或乾燥食物。

急凍



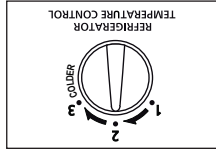
使用提示

各部名稱



溫度控制

雪櫃溫度操作改變 REFRIGERATOR TEMP. CONTROL。



溫度雪櫃冷藏室控制	
"1"	比「2」級高大約 2°C ~ 3°C
"2"	大約 3°C ~ 5°C
"3"	比「2」級低大約 2°C ~ 3°C

改變冷空氣條件的冷空氣操作。



冷空氣控制	
"FRIDGE MAX"	雪櫃冷藏室優先冷凍
"NORMAL"	正常
"FREEZER MAX"	急凍室優先

註：雪櫃的溫度取決於環境，室溫和儲存食品數量。

安裝位置與牆壁間的距離

- 雪櫃頂部和天花板之間必須至少留有5厘米的空隙。
- 雪櫃背面與牆壁之間必須至少留有5厘米的空隙。
- 雪櫃側面與牆壁之間必須至少留有5厘米的空隙。

安裝區域

- 切勿把雪櫃放置在潮濕的地方。因為這樣容易生鏽可能導致漏電。
- 切勿把雪櫃直接放置在陽光下照射。因為熱和陽光將使雪櫃溫度上升。
- 切勿將雪櫃靠近熱源，例如廚灶或烤箱。
- 切勿堵塞雪櫃四周的空隙。
- 雪櫃必須放置在空氣流通的位置。
- 如果雪櫃沒有接地插頭，須將其連接至接地端，以防止漏電的危險。

移動或變更位置

- 若使用電源線，應將左邊的排水托盤移開，然後拿出電源線，按下兩側排水托盤插入雪櫃內。



電源線設定

- 若使用電源線，應將左邊的排水托盤移開，然後拿出電源線，按下兩側排水托盤插入雪櫃內。

LED 燈和接地

- 專為本雪櫃設計的雪櫃內 LED 燈，無法由個人進行更換。若您需要更換時，請聯絡「服務中心」。
- 如果雪櫃沒有接地插頭，須將其連接至接地端以防漏電。

使用須知

使用時...

- 當拔掉插頭後，請等 5 分鐘，然後再插上。
- 否則，可能壓縮機會停止工作。
- 根據實際操作狀態調校溫度以節省能源。
- 若您將外出一段時間，或是雪櫃裡沒有冷藏任何物品，應拔出插頭以節約能源。
- 雪櫃外壁有時會發熱，特別是在剛剛安裝之後。這種情況很正常，這是由於用來防止雪櫃凝結水氣散發出熱量而內置的醫框乾燥機管造成的。
- 當濕度很高時（例如在雨季）在雪櫃機身外部可能有水氣，特別是在櫃門密封墊周圍。請用乾淨的布片擦掉凝結的水氣。
- 新鮮盒里面的濕氣可能會凝結成水氣，所以需要布片定期進行擦拭。每月對新鮮盒清潔一次。
- 切勿將櫃門長時間打開，特別是在炎熱潮濕的天氣裡更需注意。



5 分鐘

儲存食物時...

- 切勿把熱燙的食物放進雪櫃。
- 切勿放置過多的東西。
- 食品之間必須要有間隙以保持冷卻效果。
- 將水果和蔬菜儲存在蔬菜保鮮盒中，鎖緊水份，令食物長時間保鮮。
- 應蓋緊飲水瓶，飲料瓶，以防止異味進入瓶內。
- 將蔬菜，水果及新鮮食品等食物放進雪櫃急凍或冷藏前，應使用保鮮紙包好或放入保鮮盒中。
- 如要長時間儲存，應將肉或魚等食物放入急凍室。
- 將熱餸放入雪櫃之前，請將其冷卻至室溫。
- 用蓋，塑料膜或箔片蓋住多汁食品。

特殊功能

1) ECONAVI

運行環保導航 (ECONAVI) 模式的微晶片與主控制板集成。環保導航 (ECONAVI) 模式通過檢測雪櫃的使用頻率 (開門和關門) 來自動運行以節省能源。

2) 變頻器

根據箱內的溫度變化，電動機會以不同速度運轉。當溫度穩定時，電動機會以較低速度運轉 (節能 and 低噪音)。當需要強力製冷時，電動機會以較高速度運轉。

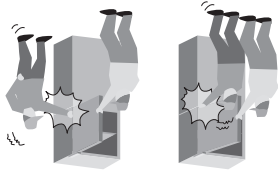
否則可能導致燙傷或意外事故。



小心

開/關櫃門時...

- 在打開雪櫃時，注意撐住門不要夾到另一隻手。
- 注意門的間隔。關門時可能夾住您的手。



儲存食物時...

- 切勿急凍玻璃瓶，否則可能導致傷害事故發生。
- 若玻璃瓶內的液體凍結，玻璃瓶可能破裂，對您造成傷害。
- 切勿在玻璃托架上放置較重物品或施加較大衝擊力。
- (否則，這些玻璃托架可能會破碎，您可能會因此而受傷。)



移動雪櫃時...

- 搬運時請牢牢抓緊雪櫃。
- 表面容易受損的地面應使用防護層等。



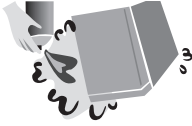
使用須知

開/關櫃門時...

- 切勿冷藏比托架或托盤大的物品，否則雪櫃門無法完全關閉，從而造成冷氣洩漏。
- 切勿頻繁打開雪櫃或打開很長一段時間，以防雪櫃內部形成水滴，因而浪費能源。
- 經常檢查櫃門密封膠，它必須與雪櫃櫃身完全貼合。

清潔時...

- 切勿使用化學物質或液體清理雪櫃。這些物體將會損壞和腐蝕雪櫃表面。
- 每三個月清洗一次雪櫃背部壓縮機上方的排水托盤，以防止因潮濕產生異味。



否則可能導致火災，
受傷，爆炸或觸電。

警告



適用於電源插頭和電源線...

- 切勿用濕手插拔插頭。
- 切勿讓電源線或插頭受損。



- 清潔時請拔下電源插頭。
- 完全插入符合雪櫃額定電流及額定電壓的牆上電源插座。
- 專為雪櫃預留一個插頭。
- 請完全展開電源線，避免將過多電器連接到供雪櫃使用的同一插頭上。
- 定期清除電源插頭上的灰塵。
- 如果電源線損壞，必須由廠家，服務代理或相關的合格人員進行更換，以防發生危險。
- 若您聞到一股燒焦的氣味，請斷開電源插頭，並對廚房進行通風。
- 若出現任何異常現象或故障，請停止使用本雪櫃。異常及故障範例。



- 電源線或插頭異常滾燙。
 - 電源線被深切或變形。
 - 聞到燒焦氣味。
 - 有麻刺感。
- 請立即聯繫您當地的經銷商進行保養/維修。

在緊急情況下...



- 只能由專業維修工人在車間進行維修工作。
- 不要儲存爆炸性物品（如氣溶膠罐）與易燃壓縮氣體（如噴霧罐）於本設備中。
- 切勿在雪櫃使用除臭劑等。洩漏的製冷劑可能接點火花而引起爆炸。
- 切勿在的食品儲藏室使用電器，除非它屬於製造商推薦的類型。
- 切勿自行嘗試拆解，維修或改裝雪櫃。
- 需要維修雪櫃時，請諮詢您的零售商或授權服務中心。
- 切勿使用機械裝置或其他方式加速解凍，製造商建議的方式除外。



安裝時需注意...

- 固定雪櫃以避免因不平衡而致
的危險。
- 定位設備時，請確保電源線沒
有被困或損壞。



- 確保將雪櫃插入接地的主線插
座。切勿插入未接地的主線
插座。



安全使用須知

請確保遵循這些說明。

警告



這個標識表示
[可能導致嚴重傷害或者死亡。]

小心



這個標識表示
[可能導致傷害或故障。]



這個標誌表示雪櫃必須接地以防止電擊。



這個標識表示需要採取行動。



這些標識表示禁止。

iso-butane
火災危害/易燃物品



否則可能導致火災，
燙傷，爆炸或觸電。

警告



使用時...



- 切勿損壞製冷電路 (位於機背的管道)。
- 切勿觸摸壓縮機或管道，此區域溫度較高。
- 切勿讓孩童攀在雪櫃門上玩耍，雪櫃可能會因此翻倒壓在孩童身上。
- 不要將任何水容器放在雪櫃頂部以防止溢出來的水引起電擊或燃燒。
- 切勿在設備後部放置多個便携式插座或便携式耗材。
- 保持設備外殼或內置結構中的通風口暢通無阻。

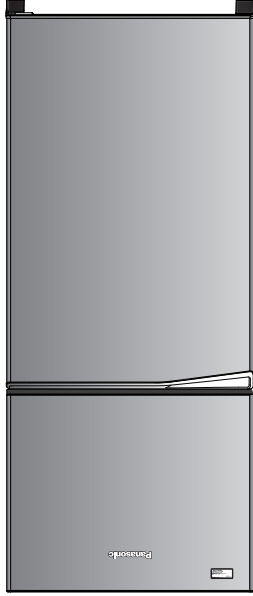


- 該雪櫃不適合身體，感官或精神能力降低或者缺乏經驗和知識的人員 (包括孩童) 使用，除非得到其安全負責人員關於使用雪櫃的監督或指示。
- 應對孩童進行監督，確保其不使用雪櫃玩耍。

回收產品時...



- 在將雪櫃做再生資源利用之前，請拆除所有的門上密封條，以防止孩童被關閉在裏面。
- 務必在雪櫃的使用壽命全程保存好上述警告標籤。
- 如果雪櫃被搬遷到其他地點以及被運送到回收廠，必須將使用者手冊轉交給任何可能使用或處理雪櫃的人。
- 根據當地相關法律，本雪櫃使用異丁烷作為製冷劑。
- 丟棄本機時，請以適當的方法處理之，切勿以火焚化。



內容

安全使用須知	2
使用須知	4
安裝	6
各部名稱	7
溫度控制	7
使用提示	8
如何製造冰塊	9
如何清洗雪櫃	9
雪櫃使用說明指引	11
規格	12

■ NON-CFC

本機的製冷劑（異丁烷（R600a）和隔熱劑（Cyclo-Pentane）都使用完全無氟的材料。所以使用該雪櫃不會傷害地球的臭氧層。

非常感謝您購買 Panasonic 產品。

- 使用本產品前請仔細閱讀這些說明並遵照第 2-5 頁的安全注意事項。
- 請確保保用證上的購買日期和零售商名稱蓋有印章，並將它和本操作指南一同收妥。